

# Connect Up School Readiness

Bethany has developed an early intervention program – Connect Up (CU), based in kindergartens to identify and support under resourced and isolated families with young children (2-6 years).

The program is designed to work with educators to assist families to reduce their vulnerabilities, thus improving children's development through supporting their wellbeing, access and inclusion into kindergartens.

CU Workers are co-located into local kindergartens to provide an accessible and integrated support service for families whilst in a familiar and safe environment. The program champions collaborative partnerships and respectful relationships to build the capacity of educators to impact the lives of families attending their kindergartens positively, to provide direct support to parents and ultimately improve the educational and growth outcomes for children.

As part of the School Readiness Program, CU is available to be implemented in kindergartens for a minimum of two terms (time fraction to be negotiated with kindergarten). Key service activities provided by the CU Workers include:

- Family wellbeing consultations with educators
- Individual outreach home visiting
- Family support and intervention
- Supported playgroup connections to complement kindergarten participation and skill development
- Facilitation of parenting group work programs
- Transitional support

## Our Locations

Connect Up workers are co-located in kindergartens and community hubs to be more accessible for families.

This program has demonstrated significant success in its current locations and is viewed as an innovative approach to expand more broadly to other kindergarten settings under the School Readiness Program.

## Program Cost Example

**\$28,015.90 plus GST**

Total costs include a Connect Up Worker for two terms, 2 days per week - 30 business day service provision. **Please contact Bethany for further information regarding the program cost and service delivery components.**

## Connect With Us

For more information or apply for this program contact:

Bethany Community Support

Ph: **03 5278 8122**

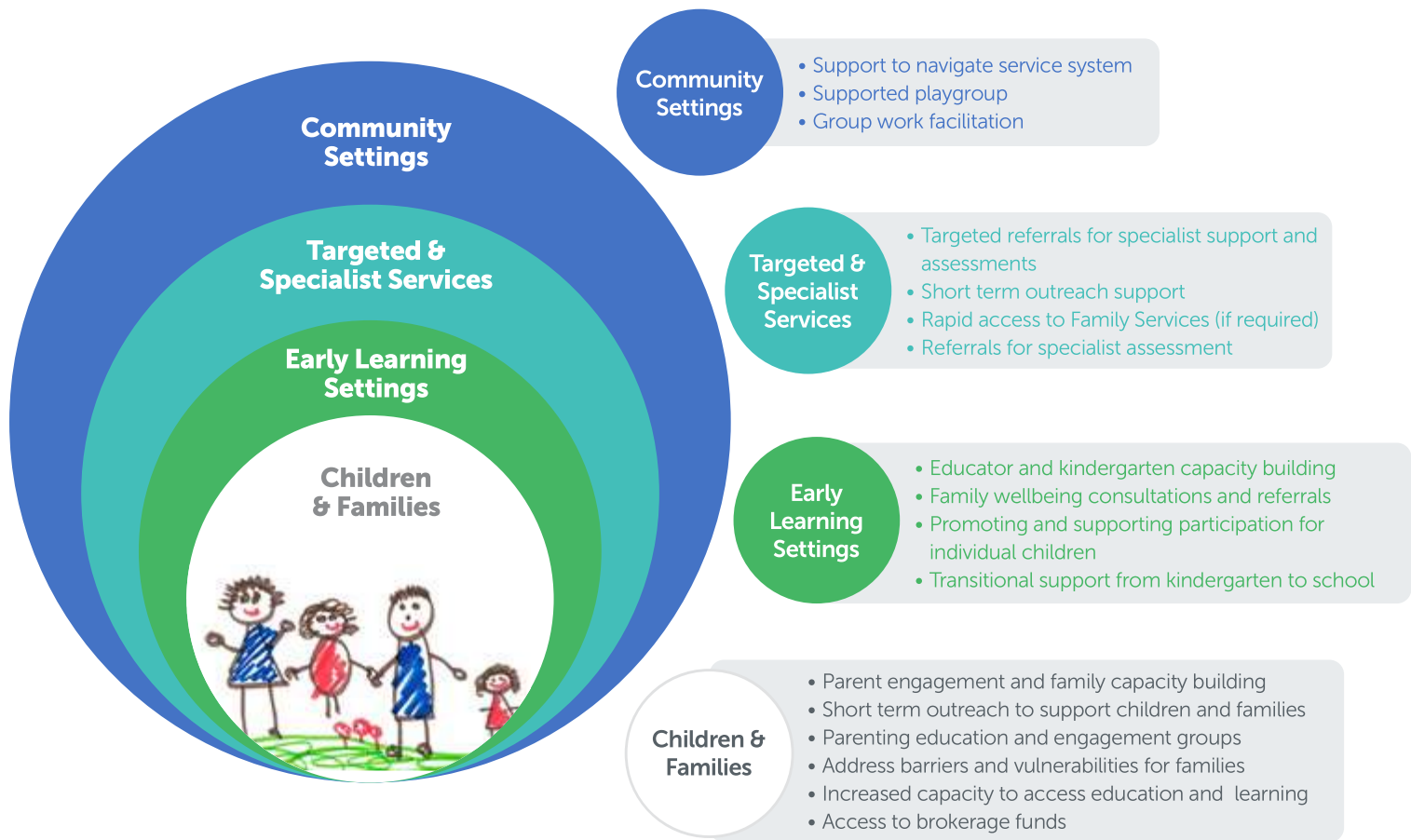
Email **[schoolreadiness@bethany.org.au](mailto:schoolreadiness@bethany.org.au)**

### Main Office

16 Ballarat Road, Hamlyn Heights, Vic, 3215  
PO Box 324, North Geelong, Vic 3215

P: (03) 5278 8122 F (03) 5278 6382 E: [schoolreadiness@bethany.org.au](mailto:schoolreadiness@bethany.org.au)

# How will the Connect Up Service Model operate in your kindergarten?



## Connect Up Benefits

In 2018, Bethany commissioned Deakin University – Centre for Social and Early Emotional Development (SEED) to evaluate Connect Up. The evaluation showed that the program provides strong value to children and families, particularly its strengths-based approach and place-based service delivery in universal settings. The program was found to build strong client relationships and trust, as well as the delivery of evidence-based components of brief intervention, linkages and case management.

*"After I did the parenting program I sent my partner along to the next program so we could use the same approach in our parenting"*  
(Connect Up Service User)

*"I am now looking for the reason behind my child's behaviours, not focusing on the behaviours"*  
(Connect Up Service User)

*"Having Connect Up workers onsite shows families that they are just regular people, here to help, who don't impart judgment. I think that's important for families to understand"*  
(Professional Stakeholder)

*"She wouldn't have as many referrals if the stigma was there. I do think they now see her as a resource, rather than someone doing things... So seeing her in that capacity, seeing her teach kids, so not a government person or DHHS, they see her as knowing her stuff, knowing about kids, that she's not there to judge them, she's there to work with them...and the playgroup has helped that, because we've had families spread that within the community"*  
(Educator)